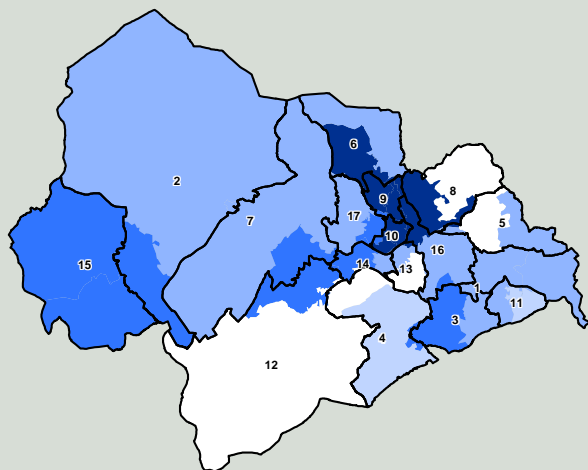


Deprivation: a national perspective

This map shows differences in the percentage of deprived people between small areas of this local *in relation to the whole of England* (2005).

National deprivation groups

- 1 Least deprived fifth of areas in England
- 2
- 3
- 4
- 5 Most deprived fifth of areas in England



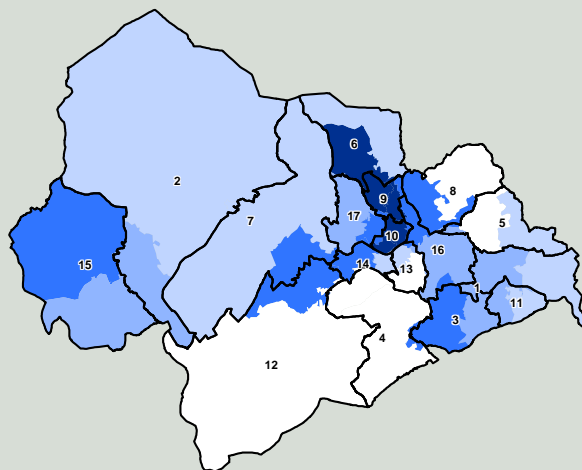
Based on Ordnance Survey material. © Crown Copyright. All rights reserved. DH 100020290 2008

Deprivation: a local perspective

This map shows differences in the percentage of deprived people between small areas *within this local authority* (2005).

Local deprivation groups

- 1 Least deprived fifth in this local authority
- 2
- 3
- 4
- 5 Most deprived fifth in this local authority



Based on Ordnance Survey material. © Crown Copyright. All rights reserved. DH 100020290 2008

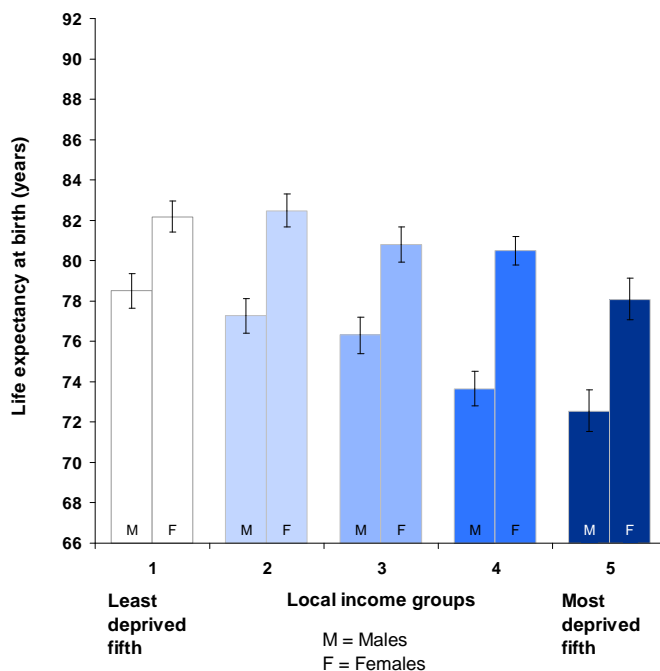
Ward legend

- 1 Brighouse
- 2 Calder
- 3 Elland
- 4 Greetland and Stainland
- 5 Hipperholme and Lightcliffe
- 6 Illingworth and Mixenden
- 7 Luddendenfoot
- 8 Northowram and Shelf
- 9 Ovenden
- 10 Park
- 11 Rastrick
- 12 Ryburn
- 13 Skircoat
- 14 Sowerby Bridge
- 15 Todmorden
- 16 Town
- 17 Warley

Ward boundaries 2005 superimposed upon MSAO (Middle Super Output Area) boundaries. Numbers correspond to ward legend. Ward boundaries may have changed.

Health inequalities: a local perspective

Inequalities in life expectancy for men and women who live in areas with different levels of deprivation (within this local authority).



95% confidence interval. These indicate the level of uncertainty about each value on the graph. Longer/wider intervals mean more uncertainty. When two intervals do not overlap it is reasonably certain that the two groups are truly different.

Health inequalities: changes over time

These trend graphs show how changes in health for this local authority compare with changes for the whole of England.

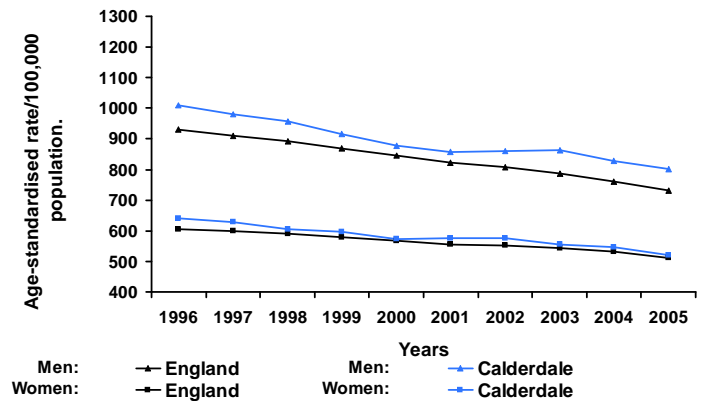
Trend 1 compares death rates (at all ages and from all causes) in this local authority with those for England.

Trend 2 compares rates of early death from heart disease and stroke (in people under 75) in this local authority with those for England.

Trend 3 compares rates of early death from cancer (in people under 75) in this local authority with those for England.

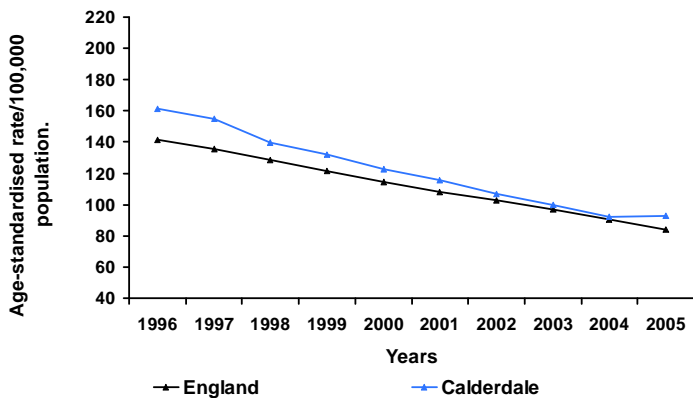
Trend 1:

All age, all cause mortality



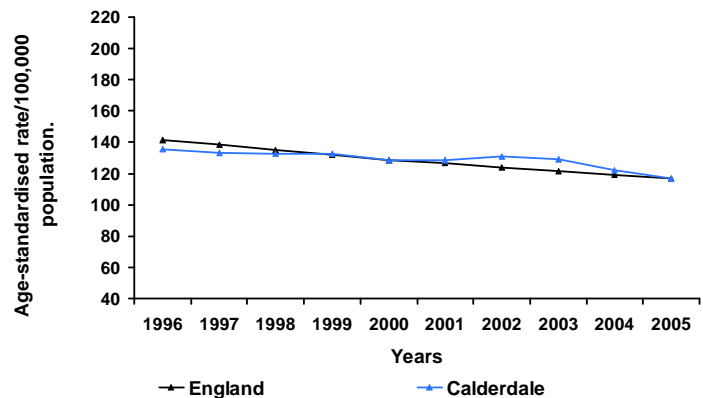
Trend 2:

Early death rates from heart disease and stroke



Trend 3:

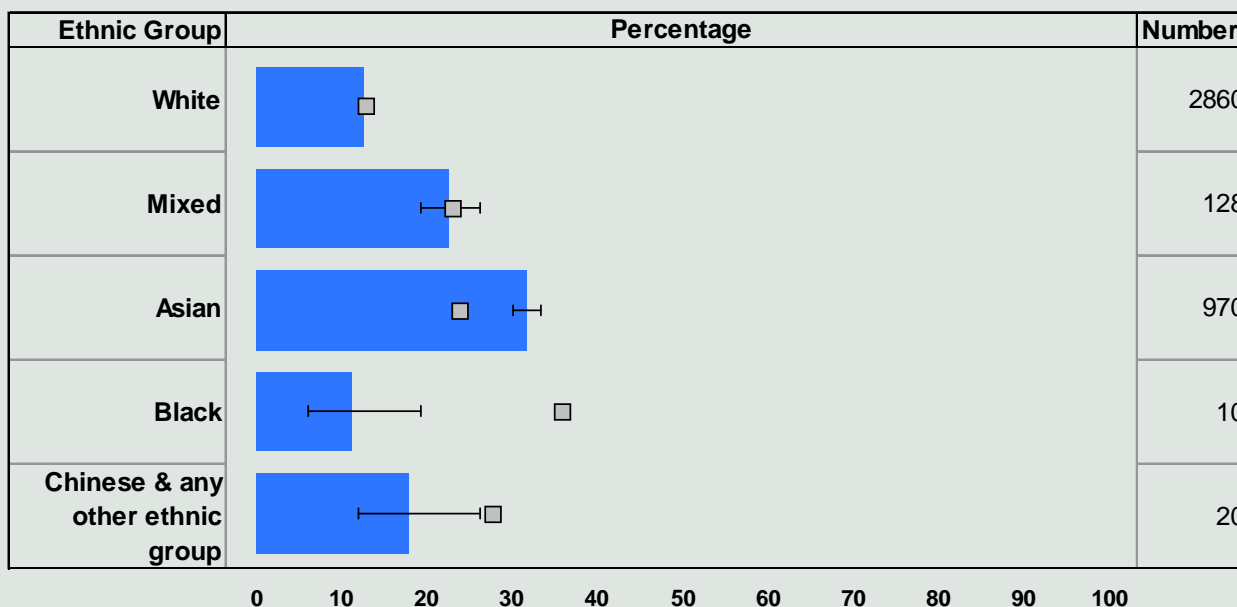
Early death rates from cancer



Health inequalities: ethnicity

This chart compares the percentage of children in each ethnic group who are eligible for free school meals. Eligibility for free school meals is an indicator of deprivation, and people who suffer more deprivation tend to have poorer health. Comparing deprivation by ethnic group helps identify potential health inequalities between groups.

Percentage and number of children eligible for free school meals



Note: This chart is based on the 2001 Census. Where the total population in an ethnic group in the local authority is less than 30, no data have been presented and the number column shows n/a. Where the number is less than 5, no percentage is shown.

Legend:
 England - average
 Calderdale

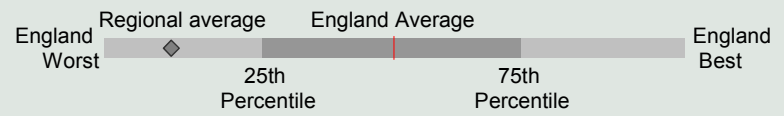
Confidence intervals are shown for local data

Health summary for Calderdale

The chart below shows how people's health in this local authority compares to the rest of England. The local result for each indicator is shown as a circle, against the range of results for England which is shown as a bar. A green circle may still indicate an important public health problem.

- Significantly worse than England average
- Not significantly different from England average
- Significantly better than England average

* relates to National Indicator 2007



Domain	Indicator	Local No. Per Year	Local Value	Eng Avg	Eng Worst	England Range	Eng Best
Our communities	1 Deprivation	42283	21.5	19.9	89.2	[Bar with red circle]	0.0
	2 Children in poverty *	9023	22.5	22.4	66.5	[Bar with yellow circle]	6.0
	3 Households in temporary accommodation *	76	0.9	4.5	62.0	[Bar with green circle]	0.0
	4 GCSE achievement (5 A*-C) *	1552	59.2	62.0	35.8	[Bar with red circle]	82.7
	5 Violent crime	3933	20.2	19.3	38.9	[Bar with red circle]	4.5
	6 Carbon emissions *	1454	7.6	7.6	20.6	[Bar with yellow circle]	4.6
Children's and young people's health	7 Smoking in pregnancy	400	14.5	16.1	38.8	[Bar with green circle]	4.4
	8 Breast feeding initiation *	2129	77.1	69.2	33.2	[Bar with green circle]	90.9
	9 Physically active children *	23695	84.1	85.7	63.3	[Bar with red circle]	99.2
	10 Obese children *	165	7.8	9.9	16.1	[Bar with green circle]	4.9
	11 Children's tooth decay (at age 5)	n/a	2.0	1.5	3.2	[Bar with red circle]	0.4
	12 Teenage pregnancy (under 18) *						
Adults' health and lifestyle	13 Adults who smoke *	n/a	25.5	24.1	40.9	[Bar with yellow circle]	13.7
	14 Binge drinking adults	n/a	21.1	18.0	28.9	[Bar with red circle]	9.7
	15 Healthy eating adults	n/a	25.2	26.3	14.2	[Bar with yellow circle]	45.8
	16 Physically active adults	n/a	12.4	11.6	7.5	[Bar with yellow circle]	17.2
	17 Obese adults	n/a	21.5	23.6	31.2	[Bar with green circle]	11.9
Disease and poor health	18 Under-15s 'not in good health'	424	11.4	11.6	20.8	[Bar with yellow circle]	6.4
	19 Incapacity benefits for mental illness *	3570	29.1	27.5	68.6	[Bar with red circle]	8.4
	20 Hospital stays related to alcohol *	598	294.0	260.3	741.1	[Bar with red circle]	87.6
	21 Drug misuse	1198	9.5	9.9	34.9	[Bar with yellow circle]	1.3
	22 People diagnosed with diabetes	6950	3.6	3.7	5.9	[Bar with green circle]	2.1
	23 Sexually transmitted infections						
	24 New cases of tuberculosis	22	11.0	15.0	102.0	[Bar with green circle]	0.0
	25 Hip fracture in over-65s	206	515.0	479.8	699.8	[Bar with yellow circle]	219.0
Life expectancy and causes of death	26 Life expectancy - male *	n/a	76.1	77.3	73.0	[Bar with red circle]	83.1
	27 Life expectancy - female *	n/a	81.4	81.6	78.3	[Bar with yellow circle]	87.2
	28 Infant deaths	15	6.0	5.0	10.3	[Bar with yellow circle]	0.0
	29 Deaths from smoking	352	245.3	225.4	355.0	[Bar with red circle]	139.4
	30 Early deaths: heart disease & stroke *	192	93.0	84.2	142.4	[Bar with red circle]	39.7
	31 Early deaths: cancer *	241	116.9	117.1	167.8	[Bar with yellow circle]	76.7
	32 Road injuries and deaths *	119	60.6	56.3	194.6	[Bar with yellow circle]	20.8

Note (numbers in bold refer to the above indicators)

1 % of people in this area living in 20% most deprived areas of England 2005 **2** % of children living in families receiving means-tested benefits 2005 **3** Crude rate per 1,000 households 2005-2006 **4** % at Key Stage 4 2006-2007 **5** Recorded violence against the person crimes (crude rate per 1,000 population) 2006-2007 **6** Total end user CO2 emissions per capita (ktonnes CO2 per resident) 2005 **7** % of mothers smoking in pregnancy where status is known 2006-2007 **8** % of mothers initiating breast feeding where status known 2006-2007 **9** % 5-16 year olds who spend at least 2 hrs/wk on high quality PE and school sport 2006-2007 **10** % Schoolchildren in Reception year. 2006-2007 **11** Average (mean) number of teeth per child which were actively decayed, filled, or had been extracted (age 5) 2005-2006 **12** Under-18 conception rate per 1,000 females (crude rate) 2003-2005 **13** % Modelled estimate from Health Survey for England. 2003-2005 **14** % Modelled estimate from Health Survey for England. 2003-2005 **15** % Modelled estimate from Health Survey for England. 2003-2005 **16** % aged 16+ 2005/06 **17** % Modelled estimate from Health Survey for England. 2003-2005 **18** % who self assessed general health as 'not good' (directly age standardised) 2001 **19** Crude rate per 1,000 working age population. 2006 **20** Directly age and sex standardised rate per 100,000 pop. 2006-2007 **21** Crude rate per 1000 population aged 15-64. No significance calculated for lower tier authorities. 2005-2006 **22** % of people on GP registers with a recorded diagnosis of diabetes. 2005-2006 **24** Per 100,000 population (3-year average crude rate) 2004-2006 **25** Directly age-standardised rate for emergency admission 2006/07 **26** At birth, years 2004-2006 **27** At birth, years 2004-2006 **28** Rate /1,000 live births 2004-06 **29** Per 100,000 population age 35+, directly age standardised rate. 2004-2006 **30** Directly age standardised rate/100,000 pop. under 75 2004-2006 **31** Directly age standardised rate/100,000 pop. under 75 2004-2006 **32** Per 100,000 population (3-year average crude rate) 2004-2006

For more information from your regional PHO, visit www.apho.org.uk

You may use this profile for non-commercial purposes provided the source is acknowledged. 'Source: APHO and Department of Health. © Crown Copyright 2008.'